

**Horsham District Council Infrastructure Delivery Plan**

**February 2016**

**ADD LOGO AND FRONT PAGE TO CONSULTATION VERSION**

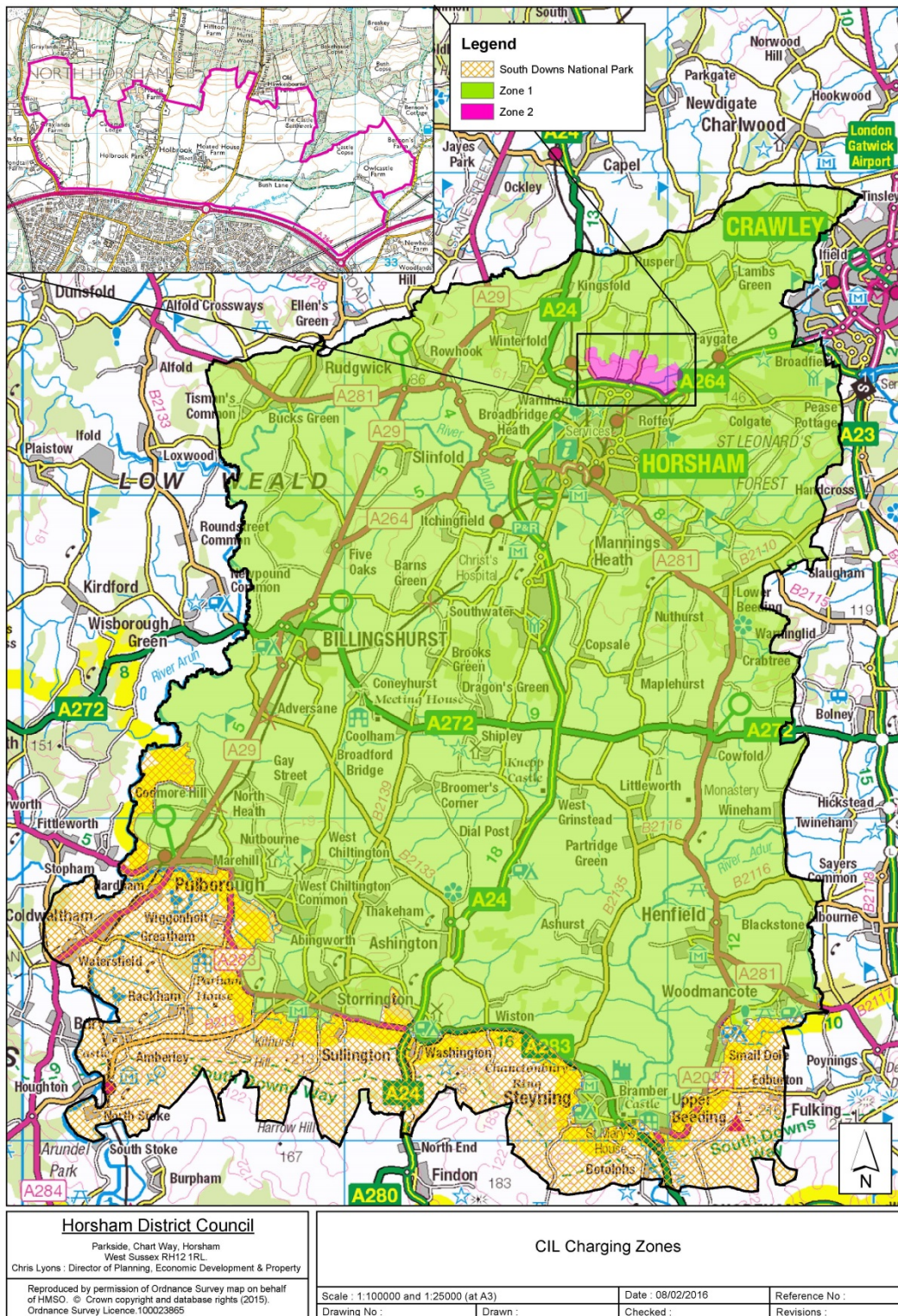
## Contents

<b>Chapter</b>	<b>Title</b>	<b>Page</b>
<b>1.0</b>	<b>Introduction</b>	<b>3</b>
<b>2.0</b>	<b>National Guidance</b>	<b>5</b>
<b>3.0</b>	<b>Horsham District Planning Framework</b>	<b>6</b>
<b>4.0</b>	<b>Future Growth Across the District</b>	<b>6</b>
<b>5.0</b>	<b>Background to the Infrastructure Delivery Plan</b>	<b>7</b>
<b>6.0</b>	<b>Process of Preparing the Infrastructure Delivery Plan</b>	<b>8</b>
<b>7.0</b>	<b>How will Infrastructure be Delivered</b>	<b>8</b>
<b>8.0</b>	<b>Evidence Base Documents</b>	<b>9</b>
<b>9.0</b>	<b>Summary of Infrastructure Costs</b>	<b>9</b>
<b>10.0</b>	<b>Baseline Infrastructure Provision</b>	<b>9</b>
	<b>Transport</b>	<b>10</b>
	Highways	10
	Railways	12
	Cycling/Pedestrians	14
	Buses	15
	<b>Education</b>	<b>16</b>
	<b>Health</b>	<b>18</b>
	GPs and Hospitals	18
	Ambulance Service	19
	<b>Sports and Recreation</b>	<b>19</b>
	Allotments	19
	Tennis and Multi-Courts	20
	Bowling Greens	20
	Built Facilities	21
	Village and Community Halls	23
	Multi-Functional Greenspace	24
	Sports Pitches	25
	Youth Areas	26
	Library	27
	<b>Public Services</b>	<b>27</b>
	Fire and Rescue	26
	<b>Utilities</b>	<b>28</b>
	District Energy Networks	28
	Gas	29
	Electricity	29
	Water Supply, Wastewater Treatment and Sewerage	30
Appendix A	Infrastructure List	33

## **1.0 Introduction**

- 1.1 The provision of new homes and the infrastructure required to support them is critical in meeting the economic challenges of delivering sustainable communities.
- 1.2 The Infrastructure Delivery Plan (IDP) sets out what infrastructure is required to support new growth across the Horsham District. It should however be noted that it does not include areas of the South Downs National Park located towards the south of the district. The National Park Authority is a local planning authority in its own right, although at present it has a delegation agreement with Horsham District Council to determine planning applications in the parts of Horsham that lie within the Park. Nevertheless the Council will ensure joint working where cross boundary infrastructure issues occur. The South Downs National park is currently preparing their Infrastructure Delivery Plan.

The map below shows the area (CIL Charging Zones) covered by the Infrastructure Delivery Plan:



## **2.0 National Guidance**

- 2.1 As a local planning authority, Horsham District Council has to plan positively to ensure that development and infrastructure needs are met. To ensure that new development is delivered sustainably, the infrastructure, facilities, and service needs of existing and new residents and businesses must be properly planned for.
- 2.2 The National Planning Policy Framework (NPPF) states that (para 157) “Crucially, Local Plans should plan positively for the development and infrastructure required in the area to meet the objectives, principles and policies of this Framework” and (para 162) Local planning authorities should work with other authorities and providers to “assess the quality and capacity of infrastructure for transport, water supply, wastewater and its treatment, energy (including heat), telecommunications, utilities, waste, health, social care, education, flood risk and coastal change management, and its ability to meet forecast demands” and (para. 177) “important to ensure that there is a reasonable prospect that planned infrastructure is deliverable in a timely fashion”.
- 2.3 Paragraph 173 of the NPPF highlights the need to pay “careful attention to viability and costs in plan-making and decision-taking” and emphasises that “Plans should be deliverable”. This means that the scale of development and specific sites proposed for development should not be subject to obligations and policy requirements such as requirements for affordable housing, standards, infrastructure contributions, that compromise their viability or deliverability or that prevent landowners and developers to achieve a competitive return.
- 2.4 This Infrastructure Delivery Plan aims to:
- Identify the District’s infrastructure needs for the Horsham District Planning Framework period up to 2031.
  - Set out the costs, funding sources and delivery mechanisms associated with these infrastructure needs.
  - Improve lines of communication between key delivery agencies and the local planning authority, including identifying opportunities for integrated and more efficient service delivery and better use of assets.
  - Provide evidence for the setting of a Community Infrastructure Levy (CIL)
  - Inform the types of infrastructure to appear on the Regulation 123 List.
  - Provide a ‘live’ document that can be used as a tool for helping to deliver infrastructure and which can be regularly updated to reflect changing circumstances and needs.

### ***Definition of Infrastructure –***

*‘A collective term for services such as roads, electricity, sewerage, water, education and health facilities’*

For the purpose of this document the definition of key infrastructure categories, and the elements within each group is set out in the table below:

<b>Infrastructure</b>	<b>Specific Elements</b>
<b>Transport</b>	<ul style="list-style-type: none"> <li>• Road</li> <li>• Bus</li> <li>• Rail networks</li> <li>• Cycling and walking infrastructure</li> </ul>
<b>Education</b>	<ul style="list-style-type: none"> <li>• Further and higher education</li> <li>• Secondary and primary education</li> </ul>
<b>Health</b>	<ul style="list-style-type: none"> <li>• Acute Care and General Hospitals</li> <li>• Mental health hospitals</li> <li>• Health centres/ Primary Care Trust</li> </ul>
<b>Social Infrastructure</b>	<ul style="list-style-type: none"> <li>• Supported accommodation</li> <li>• Social and community facilities</li> <li>• Sports centres and other recreation facilities</li> <li>• Play space</li> </ul>
<b>Green Infrastructure</b>	<ul style="list-style-type: none"> <li>• Flood defence</li> <li>• Open spaces and parks</li> </ul>
<b>Public and Community Services</b>	<ul style="list-style-type: none"> <li>• Emergency services (ambulance, fire and rescue, and police)</li> </ul>
<b>Utility</b>	<ul style="list-style-type: none"> <li>• Electricity, gas and water supply</li> <li>• Wastewater treatment</li> <li>• Telecommunications infrastructure</li> </ul>

Table 1: Categories of Infrastructure

### 3.0 The Horsham District Planning Framework

3.1 The Horsham District Planning Framework November 2015 (HDFP) highlights the need for infrastructure as part of the 'vision' for the district:

“There is significant investment in the leisure offer and community facilities to support and provide choice for all, thereby sustaining the high quality of life and vibrant communities, making Horsham District a destination of choice and promoting health and wellbeing”

3.2 The policies contained within the Plan emphasise the need for infrastructure to support new development and seek to ensure that proposals for new development can be accommodated either within the capacity of existing infrastructure or through infrastructure improvements.

### 4.0 Future Growth across the District.

4.1 The IDP seeks to assess infrastructure requirements at both a district wide scale as well as on a spatial basis. To enable the assessment of future infrastructure required to support growth, it is necessary to identify the likely growth that will occur and its spatial distribution.

- 4.2 The population of the District will rise over the next 20 years. This will also lead to an increase in demand for housing and the associated infrastructure to support new growth. The Horsham District Planning Framework has identified a requirement for 16,000 new homes over the plan period. This is identified in policy 15 and is proposed to be spread across three strategic sites at Land North of Horsham, Land South of Billingshurst and Land East of Southwater, as well as complementary delivery across the rest of the district including through Neighbourhood Planning.

#### **Land North of Horsham**

- 4.3 The HDPF proposes to allocate at least 2500 homes on a strategic site on land North of Horsham.

#### **Land West of Southwater**

- 4.4 On the HDPF allocation site on Land West of Southwater 600 homes are being delivered.

#### **Land South of Billingshurst**

- 4.5 The HDPF allocates 150 homes on a strategic site on land South of Billingshurst.

#### **Neighbourhood Planning**

- 4.6 Currently over 80% of the district is designated for Neighbourhood Planning purposes. The xx Parishes and other qualifying bodies across the district are making good progress towards Neighbourhood Development Plans. The HDPF allocates 1500 homes to be identified and delivered through Neighbourhood Plans. A summary of the current status for Neighbourhood Planning is;

1 Made Plan  
2 submitted

### **5.0 Background to the Infrastructure Delivery Plan**

- 5.1 The IDP provides a update to the Horsham District Infrastructure Study (May 2010). This study was intended to provide an evidence base on infrastructure requirements to assist HDC in making decisions on the deliverability of growth in the district to 2026 and beyond. Since this was prepared the Council has progressed the preparation of the Horsham District Planning Framework, specifically the identification of the required housing target and the location of two strategic development sites. Therefore the key issues and priorities within the 2010 assessment have needed to be updated.
- 5.2 The IDP provides a current assessment of the infrastructure requirements, identified funding and delivery mechanisms, and serves as evidence to justify the Council's Community Infrastructure Levy (CIL), which will be introduced in 2016. It also identifies appropriate infrastructure to support the existing and planned levels of housing and employment development across the District over the next 20 years.

## **6.0 Process of preparing the infrastructure Delivery Plan**

- 6.1 The IDP has been prepared by Horsham District Council in partnership with other government bodies and relevant agencies. This has been a continual and will be an ongoing process.

### **Process:**

- 1) Review of existing plans and projects
  - 2) Information gathered from partners.
  - 3) Prepare an infrastructure schedule setting out what infrastructure will be required to support new growth.
- 6.2 It is recognised that the requirement for infrastructure schemes may vary over the plan period, therefore an update of the schemes that are identified over time will take place as required.
- 6.3 This IDP provides a baseline position of the infrastructure requirements across the District. Horsham District Council will continue to work closely with relevant partners and infrastructure providers throughout the plan period to ensure the IDP is reviewed and updated to reflect progress on infrastructure delivery as well as changing needs, circumstances and priorities. Throughout this process, the IDP will aid the Council and relevant partners to prioritise spending on infrastructure and address funding gaps.

## **7.0 How will Infrastructure be delivered**

- 7.1 Some elements such as the delivery of on site utility infrastructure will be an integral part of all new development. In most cases the costs of providing on site utilities and connection to existing networks will be borne by the developer. Outside of the site itself, if sufficient infrastructure capacity does not already exist to meet the need created by new residents or users of a development, the developer may need to make a financial contribution towards provision or enhancement elsewhere.
- 7.2 Where relevant, the IDP indicates how the infrastructure will be provided whether this is to be by the developer, the infrastructure provider or through S106 or CIL contributions.
- 7.3 The Community Infrastructure Levy (CIL) is not expected to fully plug the infrastructure funding gap and is considered as only one source of funding for delivering infrastructure. Therefore other sources of funding such as the New Homes bonus, or equivalent grants, could be used on delivering community projects and S106 monies may be used to deliver on site infrastructure or off site if cannot be delivered on site. Nevertheless it is important that the charging authority ensures that there is no overlap in the use of CIL and S106 contributions so as to avoid 'double dipping' which would mean the developer is paying twice.
- 7.4 The provision for affordable housing will still be agreed through a S106 agreement.



## 8.0 Evidence base documents

- 8.1 All infrastructure schemes set out in appendix A have been based on appropriate evidence. An indication of the key of all evidence base documents used is set out in section 10 below under the relevant infrastructure heading. To see a fuller list of evidence that has informed the development of the planning strategy in the HDPF and in turn the required infrastructure reference should be made to the HDPF evidence base. [add link when consultation page is set up](#)

## 9.0 Summary of Infrastructure Costs

- 9.1 The table set out in appendix 1 identifies what infrastructure is required to support new development and how this is likely to be funded (CIL, S106, other funding sources). The table identifies that the draft total cost of infrastructure that is proposed to be funded by CIL shows that there is a significant 'funding gap'. The infrastructure that is required to be funded through CIL amounts to £The projected income from the CIL is £, therefore the total 'funding gap' is £
- 9.2 The infrastructure list in appendix 1 identifies what schemes will be required to deliver future growth as set out in the Horsham District Planning Framework and includes the following information:
- **Infrastructure Type** - The infrastructure schemes have been grouped into seven categories to capture all types of infrastructure.
  - **Scheme** - This sets out what is infrastructure is proposed and where.
  - **Phasing / Priority for Delivery** - This has been shown where the evidence base documents or discussions with infrastructure providers have identified when schemes are likely to come forward for development.
  - **Costs Estimates** - The table summaries what the estimated costs are likely to be and is based on what has been available in the evidence base and discussions with key stakeholders and infrastructure providers. This also provides information on the schemes which are likely to be eligible for CIL funding or delivered based on other types of funding.
  - **Evidence Base** - This provides a note of which evidence base documents the infrastructure requirement has been identified (*see chapter 8*)
  - **Delivery Responsibility** - This identifies which organisation is responsible for the delivery of each infrastructure scheme.

## 10.0 Baseline Infrastructure Provision

- 10.1 To establish the future requirements of infrastructure to support growth, it is necessary to establish what existing infrastructure is currently in place and how 'fit for purpose' it is to serve the existing and future population. This baseline information helps to identify where there are existing growth pressures on infrastructure and what capacity there is to support growth across the District.

10.2 The following baseline information sets out the existing infrastructure that is located across the district: -

## **Transport**

### **Highways**

#### **Current Provision**

10.3 The District has a number of strategic roads and a network of local roads. The road network in the District is generally good, with the A24 as the main north-south route and the A272 the main east-west link. The A264 connects Horsham to Crawley and onwards to the A23/M23 and the wider motorway network.

#### **Evidence**

- Horsham District Transport and Development Study (2014)
- West Sussex County Council Transport Plan 2011 – 2026 (LTP3)
- Chichester and Horsham Travel Survey (October 2013)

#### **Summary, Future Need and Funding**

10.4 The West Sussex County Council (WSCC) Local Transport Plan 2011 – 2026 (LTP3) provides strategic direction for transport within West Sussex, but aligns itself closely with other major strategies, such as the County Strategy and the Local Community Strategies. LTP3 has identified that the A24 causes severance as it bisects the District linking London to the south coast. A lack of safe crossing points discourages people from accessing neighbouring communities and enjoying the public rights of way network. Congestion on roads that have to cross or feed into the A24 is often experienced during the peak periods of the day.

10.5 The A264, A29, A281, A272, A283, and the A2037 all pass through the District. All of them suffer from congestion during peak periods, particularly on the A264 between Horsham and Crawley and at junctions on, and roads adjoining the A24.

10.6 The WSCC implementation plan which forms part 2 of LTP3 focuses on how it is planned to tackle the identified transport issues in each part of the County, as set out below, as and when funding becomes available. All new schemes and developments should contribute and support in some way to the following: -

- Increasing use of sustainable modes of transport
- Improving network efficiency in order to improve journey time and air quality
- Developing and implementing measures which will reduce traffic emissions in the Air Quality Management Area
- Improving safety for all road users
- Improving accessibility between communities within the District.

10.7 The key aim in the Plan for Horsham District with regards to highways is set out below:

- Maintaining roads and public rights of way to a good standard.
- Improving the safety record on the A24 through delivery of improvements which tackles the identified issues effectively.
- Improving street lighting through the contract with Southern Electric.
- Ensuring that the maximum transport benefits are secured from the major strategic housing developments and other developments within the District, so that they fully integrate with existing communities and mitigate any impacts. This includes delivery of a new grade separated junction with the A24 and east- west link road to access the West of Horsham development.
- Making the best use of the existing road network and improving the way in which the network is managed to reduce current levels of congestion, for example through the use and introduction of intelligent transport systems and improving public transport.
- Working with Network Rail and our rail operators to investigate ways to minimise issues caused by level crossings across the District.
- Encouraging HGVs to use the advisory lorry route network while maintaining access to areas which businesses need to access.
- Implementing Air Quality Action Plans and assisting the District Council to develop supporting strategies and planning policies that will reduce traffic pollution in and around Air Quality Management Areas.
- Working with the local community and interest groups to identify priorities and encourage sustainable travel by improving the cycle and pedestrian network. This may include: new or improved cycle and pedestrian routes; signing; changes to speed limits; cycle parking; repairing and maintaining surfaces. Promoting sustainable transport choices through projects such as safer routes to school.
- Supporting opportunities which will improve and protect the public rights of way network throughout the District.
- Improving pedestrian accessibility throughout the towns and villages by enhancing existing pedestrian crossings, and providing new pedestrian crossing facilities at identified key locations.
- Manage on-street parking so that it compliments off-street parking in town and village centres and balances the needs of residents, businesses and visitors.
- Introducing measures to reduce the speed of traffic within residential and built-up areas where there are clear benefits from doing so and this is supported by the local community.
- Continuing to work with our bus operators to improve; the capacity and quality of the bus fleet; access to services; and the way that services are marketed.
- Seeking to reduce traffic congestion by providing a convenient, comfortable, safe and flexible public transport system that offers a real alternative to the private car and encourages sustainable movement, thereby reducing energy consumption and pollution.
- Improving the accessibility and quality of information available through the introduction of RTPI at the most used bus stops and where the whole life costs are affordable.
- Working with our partners to improve the transport interchange at Horsham railway station, as well as exploring further opportunities for improvement through the Southern station travel plan project.

- Working with rail partners, including Sussex CRP, to explore opportunities to improve other stations throughout the District and promote rail travel. This includes improvements to access, parking and integration with other modes of transport.
  - Liaising with the rail industry to ensure the best possible rail service provision as a result of the Thameslink programme, and Arun Valley signalling works that will provide some improvements to service timings.
- 10.8 The Horsham District Transport and Development Study 2014 (Updated in 2015) assessed the impact of forecast strategic development on the transport network and proposed appropriate mitigation measures.
- 10.9 The outcomes of the Horsham District Transport and Development Studies identified that the existing road network (without improvements) could not accommodate the proposed level of new development as set out in the Horsham District Planning Framework because some of the existing junctions were operating close to capacity, specifically the A264/B2195 Moorehead and A24/B2237 Robin Hood Roundabout.
- 10.10 The mitigation measures that would be needed to meet the needs of the new development were set out in the study concluded the following:
- Great Daux roundabout – Signalisation of all approaches
  - Moorhead roundabout – Widening of B2195 Crawley Road approach
  - Robin Hood roundabout – Widening of A24 approaches
  - Hop Oast roundabout – Widening of A24 approaches
  - North Horsham Strategic Development Location – Smarter choices schemes
  - Southwater Strategic Development Location – Improved sustainable modes of transport.
- 10.11 The infrastructure schemes set out in *Appendix 1* will all help to contribute towards addressing the issues set out above. Funding for the identified schemes will be met through both the Community Infrastructure Levy and S106 contributions.

## **Railway**

### **Current Provision**

- 10.12 Network Rails Sussex route is one of the main commuter routes in the south of England, carrying approximately 51,000 people each morning peak into the Central London employment zone. One of their key commuter areas is at Horsham. In total passenger growth has been 40 per cent in the last 10 years and is forecast to grow by a further 30 per cent in the next 10 years.
- 10.13 One of the main lines servicing the district is the Arun Valley line. This provides a direct link from the West Coastway towns of Chichester, Littlehampton and Bognor Regis to London Victoria and London Bridge via Horsham. The line diverges from the West Coastway at Arundel and serves a number of small to medium sized towns between there and Horsham. From Horsham two routes into London are available, Arun Valley services taking the Sussex Route via Crawley and Three Bridges or via Leatherhead. This

line provides an important long distance commuter railway, as well as attracting leisure and diversionary traffic. This is operated by Southern Trains. The train operators that currently provide a service to the stations located across the district are Southern Rail and First Capital Connect.

10.14 There are currently eight railway stations located across the district:

- Horsham
- Littlehaven
- Warnham
- Faygate
- Christ Hospital
- Billingshurst
- Pulborough
- Amberly

#### Evidence

- Network Rail - Network Specification 2015 - South East Route
- Network Rail Route Specification -South East 2015
- West Sussex County Council Local Transport Plan 2011-2026 (LEP3)

#### Summary and Future Need and Funding

10.15 There are good railway connections across the Horsham District, specifically in the north. The railways authorities have recently improved railway stations at Horsham, Littlehaven, Christ Hospital and Billingshurst.

10.16 The WSCC Local Transport Plan has identified key areas which need improving to ensure a good delivery of transport rail services. These issues are:

- Working with Network Rail and rail operators to investigate ways to minimise issues caused by level crossings across the District.
- Working with partners to improve the transport interchange at Horsham railway station, as well as exploring further opportunities for improvement through the Southern station travel plan project.
- Working with rail partners, including Sussex CRP, to explore opportunities to improve other stations throughout the District and promote rail travel. This includes improvements to access, parking and integration with other modes of transport.

10.17 In terms of future requirements the developers promoting the Land North of Horsham site are currently working with the railway authorities in assessing the viability of a new station and the impact this would have on the existing network.

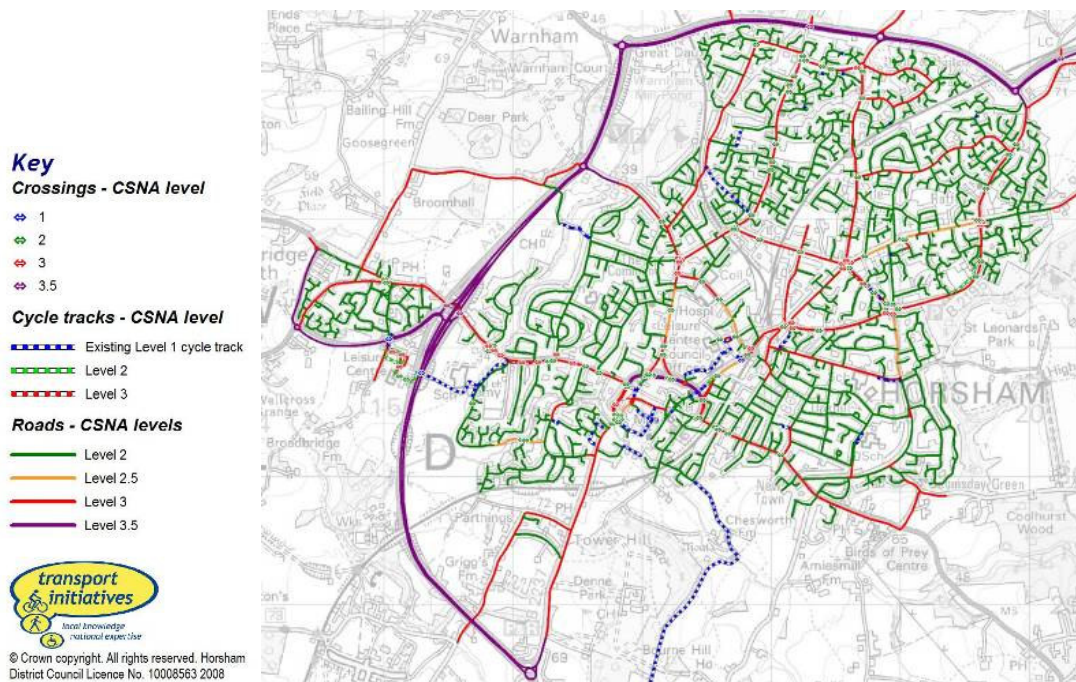
10.18 Should a new station form part of the development at Land North of Horsham, this could include a substantial amount of parking and could improve access for residents and employers at the new development. It could also give greater access to the railway network from a wider area around Horsham

town and the surrounding areas. The current proposal for the new station is for a modern station with a 12 carriage capacity.

## Cycling / Pedestrian

### Current Provision

10.19 The increased emphasis on sustainable transport is important across the District, especially in an area which has such a high level of car ownership. There are a number of cycle routes both within the built up area and off road within the District. The largest provision for cyclists is located within the built up area of Horsham Town and Broadbridge Heath. A map of the routes and crossing through Horsham and Broadbridge Heath are set out below:



### Evidence

- Horsham Cycling Review (2009)
- Manual for Street (2007)
- West Sussex Local Transport plan 2006 – 2016
- Horsham District Community Partnership Transport Plan
- West Sussex County Council - Draft Rights of Way Improvement Plan (Feb 2014)

### Summary, Future Need and Funding

10.20 The Horsham Cycling Review assessed the level of cycling provision and cycling routes across the district, but primarily within the Horsham urban areas. It concluded that improvements and upgrades are required to existing routes, the need for new routes and linkages have been identified as well as better crossing facilities and access to the cycling network.

10.21 The WSCC Transport Plan 2011-2026 has identified the provision of improving the cycling network as a priority. It has also been identified that there is a need for:

- Working with the local community and interest groups to identify priorities and encourage sustainable travel by improving the cycle and pedestrian network. This may include: new or improved cycle and pedestrian routes; signing; changes to speed limits; cycle parking; repairing and maintaining surfaces.

10.22 The review provided recommendations for cycling priority routes as well as other infrastructure improvements related to cycling. Funding for a number of the schemes identified in the Horsham Cycling Review is likely to be funded by the CIL.

## **Buses**

### **Current Provision**

10.23 The District is fairly well serviced with buses across the District, however the villages and rural areas are not so well served. Buses across the District are served by Arriva, Compass Travel, Metrobus and Stagecoach.

10.24 Public Transport is important to improving sustainable transport within the District and therefore it is important to ensure that new development is serviced by suitable bus routes. This is particularly relevant in rural locations.

### **Evidence**

- WSCC Local Transport Plan 2011 – 2026 (LTP3)

### **Summary, Future Need and Funding**

10.25 The WSCC Transport Plan 2011 – 2026 has identified key areas of improvement in providing bus travel across the district. This is:

- Continuing to work with our bus operators to improve; the capacity and quality of the bus fleet; access to services; and the way that services are marketed.

10.26 It has also been identified that a number of settlements across the district require 'real time bus display boards', located at bus stops. There is also a deficiency in rural bus services which needs to be improved to enable more sustainable travel choices.

10.27 Improvements to bus services will be provided through both through S106 contributions, specifically on larger scale sites and CIL contributions on smaller schemes.

## **Education**

### **Current Provision**

- 10.28 WSCC has a statutory duty to provide education for all children of school age, normally 4 to 18 years and ensure there are sufficient appropriate school places available. It discharges this duty in partnership with diocesan authorities and other providers. In deciding the need for places it considers the capacities of existing schools and the forecast number on roll within a locality.
- 10.29 In West Sussex, primary education generally includes children from 4 to 11 years of age (7 year groups) and secondary education is provided for children from 11 to 16 (5 year groups) or 11 to 18 years. There are currently;
- 44 primary schools within the Horsham District.
  - 6 secondary schools at Rydon Community College (Pulborough), Steyning Grammar School (Steyning), Tanbridge House School (Horsham), The Forest School (Horsham), The Weald (Billingshurst) and Millais School (Horsham).
  - Two colleges at College of Richard Collyer (Horsham), Brinsbury College (Pulborough), which is an agricultural college, as well as The Weald and Steyning Grammar School which provide education up to 18 years.
  - There is one special education needs school at Queen Elizabeth II Silver Jubilee School, Horsham.

### **Evidence**

- Planning School Places 2015



## Summary Future Need and Funding

10.30 The 'Planning School Places 2015' identifies how WSCC will need to plan to provide for additional pupil places in the future. The schools that have been identified for potential expansion are:

<b>Initial Proposed Scheme</b>	<b>Type</b>	<b>Additional places per year group (total places)</b>	<b>Commissioning Position</b>	<b>Target Opening Date</b>
Shelley Primary School, Broadbridge Heath	Relocation and expansion	30 (210)	Statutory notices approved	Sept 2017
Southwater Primary Schools	Extension	15 (105)	Yet to be commissioned	Sept 2019+
East of Billingshurst Primary	New School/ Extension	30 (210)	Yet to be commissioned	Sept 2019+
North of Horsham Primaries	Two New Schools	60 (420) 60 (420)	Yet to be commissioned - dependant on housing.	Sept 2020+
North of Horsham Special School	New School	4 (60)	Yet to be commissioned - dependant on housing.	Sept 2020+
Queen Elizabeth II Special School	Extension to current 82 planned places	16 in total	In build.	Sept 2015
The Weald Secondary School	Extension	30 or 60 (372 inclu. sixth form)	Consultation with school taking place. Second form of entry dependant on housing.	Sept 2017+
Interim option before a new secondary school can be built	Embryo School/ School extensions Y7, Y8, Y9	120 (360)	Yet to be commissioned. Discussion with locality heads in progress	Sept 2018
North of Horsham Secondary	New School	180 – 240 (900 - 1200)	Yet to be commissioned - dependant on housing.	Sept 2020+

- 10.31 As set out increased growth will require additional school places for primary and secondary provision. This is set out in the appendix 1. The IDP has identified the need for additional primary, secondary, early years and a specialist school to support the development on the North Horsham Strategic Site. This requirement will be provided within the strategic site. The strategic site at Land West of Southwater would also generate a requirement to contribute towards primary, secondary and early years education. This would be provided through a contribution to existing facilities rather than development within the site.
- 10.32 West Sussex County Council has also identified that the proposed new development across the district will need some of the existing schools to expand.

## Health

### GPs and Hospitals

#### Current Provision

- 10.33 Healthcare across the District is delivered primarily by the Clinical Commissioning Group (CCG) and NHS England. This is delivered both at the primary level within the existing communities through GP Surgeries and Dentists, and the secondary (acute) care level, through the Horsham Hospital in/out patient facilities.
- 10.34 The NHS England planning guidance for 2014/15 to 2018/19, '*Everyone counts*' describes a clear ambition of '**high quality care for all, now and for future generations**', divided into three sections: delivering transformational change; maintaining the focus on essentials; and leading the way through commissioning. The guidance is supported by the NHS mandate, NHS Outcomes Framework 2014/15, guidance on the Better Care Fund and the NHS E 'Call to Action', as well as the NHS Constitution and financial framework. The CCG has produced a Commissioning plan which is a key component of the Horsham and Mid Sussex CCG commissioning process, and set out how the CCG will work to deliver its responsibilities.
- 10.35 Proposals across Crawley CCG and Horsham and Mid Sussex CCG for how CCG plans for health and well-being and local services will be implemented are set out in the CCG plans as well as additional business plans for specific areas of care

#### Evidence

- NHS Horsham and Mid Sussex CCG Commissioning Plan 2014-2019

#### Summary, Future Need and Funding

- 10.36 Future growth across the district is likely to have an impact on NHS capacity and demand particularly locally for primary care services. In terms of funding there is a need to identify capital and revenue implications and then source funding. It is likely that a S106 contribution will be required to fund the provision of health at Land North of Horsham and larger residential development sites. Therefore funding in whole or part may be required through S106 and CIL contributions.

## **Ambulance Service**

### **Current Provision**

10.37 The Ambulance Service is provided by the South East Coast Ambulance Service and forms part of the NHS Foundation Trust. The South Coast Ambulance Service covers the area around Horsham, Crawley, East Grinstead and Horley where there are 53 ambulances, plus other resources such as paramedics in cars.

10.38 There is an Ambulance Station located along Hurst Road in the centre of Horsham which provides a base for a critical care team of paramedics. In addition to this there is a Hazardous Area Response team based at Gatwick that serves the district and comprises of front line clinical staff. There are also a number of community responders located throughout the District, specifically in more rural and hard to reach locations.

### **Evidence**

- Discussions with the Ambulance Service and CCG
- South East Coast Ambulance Annual Report 2014/2015

### **Summary, Future Need and Funding**

10.39 Discussions with the Ambulance Service have identified that there may be a need in the future for an Ambulance Response Point. This would provide a stopping place for ambulances and associated facilities, as well as providing a base to ensure that the Ambulance Service can reach critical patients within an 8 minute response time. It is also likely that the increase in population will lead to greater pressure on the Ambulance Service, therefore additional ambulances may be required in the future. Additional discussions will need to be held with the Ambulance Service about potential locations for a response point.

## **Sport and Recreation**

### **Evidence - for the whole Sport and recreation section**

- The Horsham District Sport, Open Space and Recreation Assessment (2014)

## **Allotments**

### **Current Provision**

10.40 There are currently 31 allotment sites across the District which amounts to approximately 27.2 ha of allotment spaces and approximately 1,525 plots. This includes sites primarily owned by the District or Parish Council, but also several privately owned sites.

## **Summary, Future Need and Funding**

- 10.41 The Open Space and Recreation Assessment identified that there is an occupancy rate of 96%. Even so, there are still waiting lists at the majority of sites across the District, as a whole the total number of people on the waiting list equates 18-19% of the known number of plots. Therefore overall the demand exceeds supply by nearly 20%.
- 10.42 The study concluded that the need to make new houses more affordable is leading to higher densities, especially for starter homes. As a result this will inevitably result in most new dwellings having only small gardens and, as a direct consequence, may generate growth in demand for allotments.
- 10.43 Funding for Allotments is likely to come forward through the CIL or S106 with sites on larger strategic sites and within other settlements where a need has been identified.

## **Tennis and Multi-Courts**

### **Current Provision**

- 10.44 In 2012, there were 115 courts on 32 sites, of which 89 are tennis courts and 26 are multi-courts. The main sites are:
- 15 courts at Christ Hospital
  - 7 courts at Compton's Tennis Club, Lower Beeding
  - 9 courts at Horsham Cricket Club
  - 5 courts at Horsham Park
  - 6 courts at Steyning Leisure Centre
  - 8 courts at Storrington Leisure Centre

## **Summary, Future Need and Funding**

- 10.45 The study identified that based on the quality standards there is a need for more courts across the District. It also identified that most of the courts across the District appear to be in good condition, especially those owned by private Tennis Clubs and at Horsham Park. It concluded that there may be scope to increase the capacity of the existing courts with the use of floodlights. However, this may not be appropriate in rural low lighting locations. Funding for the provision of additional tennis facilities will be through CIL contributions.

## **Bowling Greens**

### **Current Provision**

- 10.46 Horsham District has a total of nine bowling greens that are reasonably distributed across the district in locations. There are three in Horsham, one in Billingshurst, one in Pulborough, one in Storrington, one in Steyning and one on Henfield.

## Summary, Future Need and Funding

10.47 The Open Space and Recreation Assessment concluded that there is adequate provision for bowls facilities in the District and this is likely to remain the case for the foreseeable future as the existing clubs are likely to have spare capacity to accommodate additional members.

### Built Facilities

#### Current Provision

10.48 Across the district there are a number of built sports facilities. The provision and commentary about the standard is provided below:

- **Artificial Turf Pitches** – 7 pitches are located across the district (Steyning Grammar School, Weald School, Bluecoats Sport Centre, Tanbridge House School, Millais School and Farlington School).
- **Synthetic Athletics Track** – There are currently two athletic tracks in the district (6 lane track with 8 lane straight at Broadbridge Heath Leisure Centre/ 8 lane track at Rikkyo School). It should be noted that the track at Rikkyo School is not for public use and therefore the main provision is at Broadbridge Heath. *Nevertheless it was recognised that few area association athletic meetings are held on 6 lane tracks, therefore athletics meetings are more likely to use the 8 lane athletics track in the nearby authority of Crawley at K2.*
- **Indoor Bowls Hall** – There is currently 1 indoor bowls hall at Broadbridge Heath, which provides an 8 rink facility.
- **Health and Fitness** – According to the Active Places Power, the District has some sixteen health and fitness facilities with a total of 643 stations. This is slightly lower than the average across the South East region where the average across the district per 100 residents is 5.27 compared the regions average of 5.66. These facilities are mainly clustered around the Horsham Town, but there are also sizeable facilities in Billingshurst, Henfield and Steyning as well as some of the other larger settlements.
- **Indoor Tennis** – *There is currently no provision for indoor tennis across the District.* On average, local authority areas in the South East of England as a whole should have 0.03 courts for every thousand residents.
- **Sports Halls** – The District has a sports hall with at least three badminton courts in 13 of its 22 wards. The Sport England Facilities Model identifies that nearly two thirds of sports halls within the District are on school sites. The age of the stock of hall buildings is relatively old with no new hall being built within the last 10 years.
- **Swimming Pools** – The District has four 25m indoor pools located at Billingshurst, Bluecoats – Christ Hospital, Pavilions in the Park – Horsham and Steyning and has a combined water area of some 1,451sqm. However as Bluecoats provides private membership this

should be deducted from the total which leaves the total provision of 1,138sqm. The Sport England Facilities Model identifies that pools within the District are relatively modern and attractive and satisfy 92.3% of the current demand from Horsham District residents.

## Evidence

- The Horsham District Sport, Open Space and Recreation Assessment (2014)
- Active Place Power
- Sport England Facilities Planning Model – Strategic assessment of need for swimming provision and sports hall provision. (September 2013)

## Summary, Future Need and Funding

10.49 A summary of the future need and funding for built recreation facilities is summarised for each below;

- **Artificial Turf Pitches** – The study identified that each of the larger settlements as identified in the strategy in the HDPF should have at least one 3G Artificial Turf Pitch. Therefore the priority areas are Henfield, Pulborough, Southwater and Storrington-Sullington. In addition it is desirable for Horsham to also have a 3G Artificial Turf Pitch. This provision would provide longer playing seasons and replace the need to provide large amounts of new grass playing pitches.
- **Synthetic Athletics Track** – The Broadbridge Heath track will be lost following the proposed closure of the Broadbridge Heath Leisure Centre. It is therefore proposed that there is a relocation of the track to provide facilities on the site of Tanbridge House School.
- **Health and Fitness** – The study identified that because the current level of accessibility to facilities is so good it is unlikely that there is a need for more provision.
- **Indoor Tennis** – The study identified that if the Horsham District were to have the average level of provision it would require four indoor courts. It was recommended that the District Council should investigate the potential demand for indoor tennis facilities.
- **Sports Halls** – The study concluded that the District does not need any additional sports halls, although the current stock of buildings is ageing. In those areas where provision is low or facilities are of poor quality improvements or additional provision may be required to accommodate additional capacity from additional growth. This will be undertaken in the case of the Broadbridge Heath Leisure Centre by replacing and upgrading the current facility.
- **Swimming Pools** – The study identified that there is no need for any additional provision. However there will be a need for primarily cosmetic reinvestment in the Council's existing pools within the next decade to keep it up to date and accommodate additional capacity from additional growth.

10.50 Funding for the improvements identified above will be funded through the CIL the Councils Capital Grant funding and if appropriate through S106.

## **Village and Community Halls**

### **Current Provision**

10.51 There are 80 village/community halls located across the District, of which 49 are in rural areas and 31 in Horsham itself. Only the Parish of Parham does not have a village hall and the unparished areas of Horsham.

### **Evidence Base**

- The Horsham District Sport, Open Space and Recreation Assessment (2014)

### **Summary, Future Provision and Funding**

10.52 The study concluded that there is a need for Parishes in the rural parts of the District to identify the extent to which there is a need to extend, upgrade or replace the halls in their areas and identified the priority areas. The unparished areas within Horsham Town do not have dedicated community halls and therefore new/shared facilities may be required in these locations.

10.53 These schemes will either be funded through the CIL or where there is a requirement for an upgrade to an existing facility it is likely that this will be through the Parish Council's 'meaningful proportion' of CIL contributions. The percentage of the contribution will be dependent on if the community has an adopted Neighbourhood Development Plan.

## **Play Provision**

### **Current Provision**

10.54 Across the District there are currently 123 separate play areas, which occupy a land area of just over 57,000sqm or 5.7 ha. These range in size from 37sqm (Edinburgh Close, Southwater) and 6,600sqm sub-district play area in Horsham Park, with the largest neighbourhood play area of 2,442sqm (High Bar Land, Thakeham).

10.55 The provision across the District varies between locations. This includes no provision in Bramber, Five Oaks, Parham and Shermanbury.

### **Evidence**

- The Horsham District Sport, Open Space and Recreation Assessment (2014)
- Play Strategy and Action Plan 2007 – 2012

### **Summary, Future Provision and Funding**

10.56 The Assessment identified that there is a general need for play provision and play facilities across the District, especially in relation to new housing

developments and the quality of the existing provision. Given the poor play values of many existing sites, the main priorities are:

- Enhancing the quality of existing play facilities
- Identifying and developing more opportunities for “natural play”
- Ensuring that local greenspaces, especially those in housing areas with a significant proportion of families and children, provide high value play opportunities.

10.57 The Play Strategy also identified a number of improvements which includes two broad thrusts:

- To enhance four play areas a year, subject to the availability of adequate funding; current projects at Chess Brook Green – Henfield and Beech Road in North Horsham and the sub-district play area at Southwater Country Park.
- To rationalise the overall pattern of provision by removing some sites with low play value in order to concentrate resource on those with high value.

10.58 Funding for play facilities will be provided either as on-site provision by the developer, lottery funding or through the Community Infrastructure Levy.

## **Multi-Functional Greenspace**

### **Current Provision**

10.59 The gross area of Multi-Functional Greenspace (MFGS) is some 291 ha with the net area 282ha. The overall quantity of provision splits into:

- Amenity Greenspace 68ha gross
- Natural Greenspace 95ha
- Parks and recreation grounds 113ha

**Total 275ha**

### **Evidence**

- The Horsham District Sport, Open Space and Recreation Assessment (2014)

### **Summary, Future Need and Funding**

10.60 The study identified that the total provision of MFGS across the District was insufficient and not suitably accessible. It identified that either existing areas need to be improved or additional need is required. It identified the priority areas as Billingshurst, Henfield, Horsham, North Horsham, Pulborough, Southwater and Storrington and Sullington. The main priorities are to:

- Secure long term public access to strategically important privately owned sites
- To increase the amount of MFGS within easy reach of the residents of Horsham and Broadbridge Heath, for example by promoting



continuous paths around their periphery in the urban fringe that link to the rights of way network and the wider countryside

- To enhance those existing greenspaces of low quality
- To ensure new developments include an appropriate amount of new greenspace provision.

10.61 Funding for additional MFGS will be provided by the s106 and CIL.

## **Sports Pitches**

### **Current Provision**

10.62 Across the District (excluding school pitches) there are 31 cricket pitches, 53 adult football pitches, 40 youth and mini football pitches and 8 rugby union pitches. In addition to these there are a number of pitches located on school sites across the District. These are 17 cricket pitches, 12 adult football pitches, 22 youth and mini football pitches and 21 rugby union pitches.

### **Evidence**

- The Horsham District Sport, Open Space and Recreation Assessment (2014)

### **Summary, Future Provision and Funding**

10.63 The study identified that the majority of sports pitches are adequate, however these are likely to require improvements with increased usage. Also the analysis suggested that participation in sport is likely to grow and therefore it is likely that additional provision will be required in the future. The study estimated that a mix of new growth and increased participation is likely to generate an increase in usage of 10%. It was also considered that the accessibility of cricket and football pitches is good, however rugby is much less. Over the years there has also been a significant increase in the participation of hockey. The study also identified that there was a need for an artificial turf pitch. Funding for additional sports pitches will be provided by the S106 and the CIL.

## **Youth Areas**

### **Current Provision**

10.64 The provision for teenagers and young people across the District include facilities on 34 sites located across 18 parishes with a total of 47 facilities which are:

- Ball courts 7
- Ball Walls 1
- Basketball area 12
- Skateboard parks 17
- Youth shelter 10

10.65 At present only Amberly, Rudgwick and Storrington and Sullington come close to meeting the standards set out in the Open Space and Recreation Assessment, with 17 parishes having no youth provision.

### **Evidence**

- The Horsham District Sport, Open Space and Recreation Assessment (2014)

### **Summary, Future Provision and Funding**

10.66 The study identified that the provision for youth areas across the District is inadequate in the majority of settlements. The larger settlements of Billingshurst, Horsham, Pulborough, Southwater and Storrington and Sullington should all have a higher quality standard of provision to meet the needs of the community. Funding for youth areas will come forward through the CIL and S106 contributions.

## **Library**

### **Current Provision**

10.67 The District is well served by Library provision. There are currently 6 Libraries located across the district:

- Horsham
- Billingshurst
- Pulborough
- Steyning
- Storrington
- Henfield

### **Evidence**

- Discussions and correspondence with WSCC
- Library Service Review (Nov 2009)

## **Summary, Future Need and Funding**

10.68 WSCC Have identified that increased population growth will put additional pressure on the existing library services, therefore most libraries across the District will require improvements and upgrades to support growth. The funding provision for future library provision will come forward through the CIL.

### **Public Services**

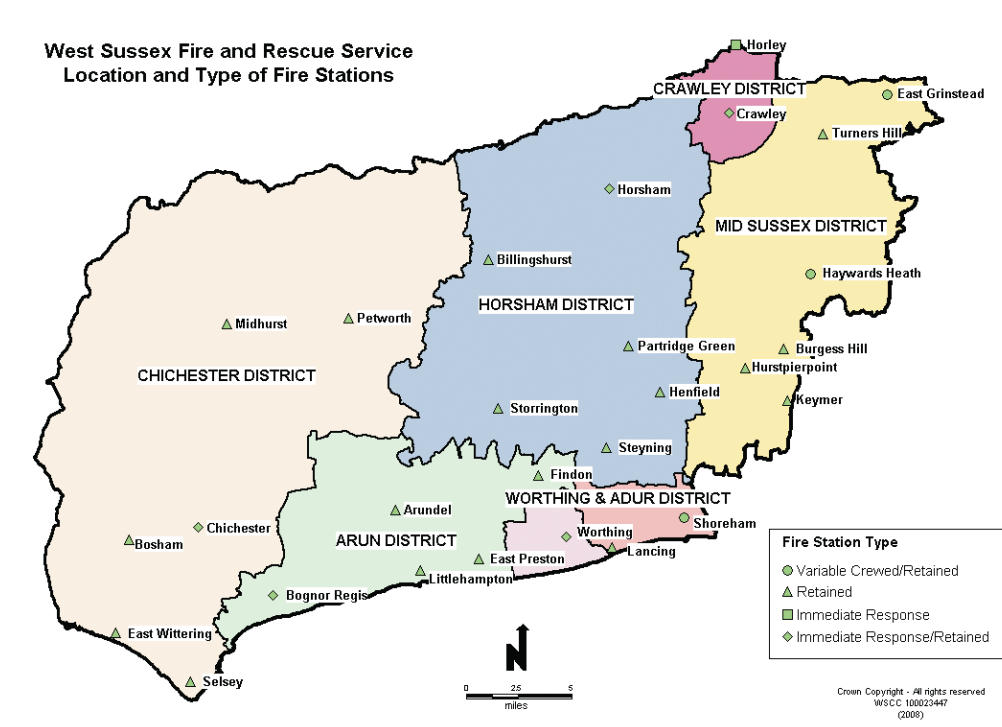
#### **Fire and Rescue**

##### **Current Provision**

10.69 WSCCI is the Fire Authority and provides the Fire and Rescue for the residents and businesses within West Sussex.. The West Sussex Fire and Rescue Service Plan 2010 – 2015 sets out five strategic aims – reducing the number of emergency incidents and their consequences; working with their partners to build a safer, stronger, healthier and more sustainable community; Safe, healthy and competent employees' provide value for money services; and reduce the impact on the environment.

10.70 The main fire station is in Horsham Town, which is an immediate response station. This means that it provides 24 hour cover for the district and has two Immediate Response fire engines and other specialist vehicles. There are also five retained fire stations at:

- Billingshurst
- Partridge Green
- Storrington
- Steyning
- Henfield



## Evidence

- West Sussex Fire and Rescue Service Plan 2010 - 2015

## Summary, Future Need and Funding

10.71 The provision of the fire service across the District is considered to be adequate. There are discussions regarding the re-location of the existing fire station located along Hurst Road. Funding for this will be provided by WSCC and developer contributions through a S106 agreement.

## Utilities

### District Energy Networks

#### Current Provision

10.72 Currently there are no district energy networks located across the District, however this is currently being explored further.

## Evidence

- Horsham District Climate Change Strategy 2009
- Carbon Trust

## Summary Future Need and Funding

10.73 Any schemes or planning applications for district energy networks across the District will be developer funded.

## **Gas**

### **Current Provision**

10.74 The provision of gas across the district is supplied by Southern Gas Network (SGN), who's the primary focus is on delivering gas to customers.

### **Evidence**

- 
- SGN Demand Forecasting Document 2015. Southern Gas Networks Capacity Investment Plan 2015

### **Summary, Future Need and Funding**

10.75 Each individual sites or schemes will be costed on a site by site basis. Nevertheless it is likely that the cost of connection and provision of gas on a site would be dealt with by the developer or supplier, however this will be dependent on the location and scale of the proposal.

10.76 SGN funding for infrastructure projects is regulated by OFGEM and as such they do not draw funding from the CIL. The infrastructure funding is based around economic test criteria, whereby the developer contributes to infrastructure delivery costs deemed uneconomic by Scotia Gas testing procedure.

## **Electricity**

### **Current Provision**

10.77 Electricity across the District is provided by UK Power Networks. There are a number of substations located across the district. These are at:

- Brockhurst Wood
- Southwater
- Cowfold
- Pulborough
- Ashington
- Storrington
- Steyning

### **Evidence**

- UK Power Networks Business Plan 2015 – 2023
- UK Power Networks – Long Term development Statement

### **Summary, Future Need and Funding**

10.78 New developments will be assessed when they come forward. Ofgem discourages Electricity Distribution Companies from investing speculatively in their infrastructure ahead of confirmed requirements. UK Power Network's asset replacement programmes provides the opportunity to rethink the way in which the infrastructure is developed to meet future customer needs particularly for connections to green and renewable energy sources.

## Water Supply, Wastewater Treatment and Sewerage

### Current Provision

- 10.79 Thames Water is the sewerage undertaker for the north eastern corner of the Horsham District. Thames Water investment programmes are based on a 5 year cycle known as the Asset Management Plan (AMP) process. Thames Water is currently in the AMP5 period, which runs from 1<sup>st</sup> April to 31<sup>st</sup> March 2015 to 31<sup>st</sup> March 2020. As part of their draft five year business plan Thames Water advise OFWAT on the funding required to accommodate growth to ensure that treatment works can continue to meet the standard required by their treatment consents. Thames Water base their investment programmes on a range of factors, including population projections and development plan allocations.
- 10.80 Water supply across the Horsham District is primarily provided by Southern Water.
- 10.81 In May 2010 Crawley Borough Council, Horsham District Council, Mid Sussex District Council, and Reigate & Banstead Borough Council appointed Entec on a joint basis to undertake a Water Cycle Study (WCS) for the Gatwick sub-region. The study investigated whether there is sufficient water supply and sewage treatment capacity in the region to accommodate the level of residential and economic growth up to 2026. In doing so the study played an important role in informing the approach of each of the contributing authorities Plans, when identifying strategic development locations and drafting policies relating to sustainability, climate change, and flood risk.
- 10.82 The document was agreed by the four local authorities, Southern Water, South East Water, Sutton & East Surrey Water, Thames Water, and the Environment Agency.

### Evidence Base

- Water Cycle Study 2013
- Southern Water Asset Management Plan 5 (2010 – 2015)
- Draft Water Resources Management Plan 2015 – 2040
- Thames Water Asset Management Plan

### Summary Future Need and Funding

- 10.83 Although the South East is identified as being subject to significant water stress, the Water Cycle Study outlines that through a twin-track approach of demand management (customer metering, leakage reduction etc). The study also acknowledged resource development (bulk water supply transfer from other areas). There is sufficient water supply to accommodate the planned growth in the Gatwick sub-region.
- 10.84 The study considered development in two locations identified in the *Leading Change in Partnership to 2026 and Beyond* Issues and Options Consultation document which drain to the Horsham WwTW (Waste water Treatment Works); North Horsham and Southwater. The study found that there was capacity within the current flow consent to accommodate growth within the

planned trajectory for both locations, however investment would be required to connect the Southwater site to the Horsham WwTW.

- 10.85 Therefore it is likely that the increased housing at Southwater would require investment at the Horsham Waster Water Treatment Site. This is likely to be funded either directly by the developer or through S106 contributions, which will be decided through the detailed planning application process.
- 10.86 Thames Water have identified that CIL contributions could be used for enhancements to the sewerage network beyond that covered by the Water Industry Act and sewerage undertakers, for example by providing greater levels of protection for surface water flooding schemes. No specific schemes have been identified within the AMP5, however this may change once the AMP6 has been prepared.

## **Waste and Recycling**

### **Current Provision**

- 10.87 West Sussex County Council is the Waste Disposal Authority (WDA) who's role is to co-ordinate and manage the disposal of municipal waste, which includes household, some commercial and industrial waste, and some waste deposited.
- 10.88 **Landfill site:** A large proportion of the County's wastes ends up in landfill sites. One of these landfill sites is located to the North of Horsham at Brookhurst Wood. This site has limited capacity until 2016 but with a planned extension could last another 5.5 years.
- 10.89 **Horsham District Council's Role:** Horsham District Council is the collection authority for waste across the Horsham District which is collected through the Acorn Waste Scheme. This collects all general refuse, glass, paper, plastic and metals, as well as garden waste. Therefore the function of the Council includes all issues associated with collection to ensure there are enough vehicles, the vehicles can be accommodated on their depot and associated maintenance. The District Council currently bases all of the refuse and recycling vehicles at the District Council's depot at Hop Oast. There are currently proposals for this to expand on the existing site. Funding for this has already been agreed through the Council's capital budget. Once waste is collected by the District Council it is delivered to one of the WSCC disposal sites.

The tables below shows the Minerals and Waste Sites located within the District:

Type of Site	Location
HWRS/WTS Sites (Municipal Solid Waste)	Billingshurst, Junction of A272 & A29 Bypass, Newbridge Lane
HWRS/WTS Sites (MSW Waste)	Horsham HWRS, Hop Oast Roundabout
Council Transfer Stations	Broadbridge Heath Depot, Worthing Road, Broadbridge Heath
Leachate Treatment Site	Warnham Leachate Plant, Warnham Brickworks, Langhurst Wood Road
Mechanical and Biological Sites	BrookhurstWood, Warnham
Thermal Treatment Sites	Oakleaves Pet Crematorium, St Andrews Farm Kennels, Brooks Green
Soil Treatment Sites	Holmbush Farm Soil Screener, Faygate
Inert Landfill Sites	Skinfold Park Golf & Country Club, Stane Street.
Inert Recovery Projects	Horsham Golf Park (Golf Course construction)
Inert Recovery Projects	Brookhurst Wood
Non Inert Landfill	Brookhurst Wood
Wastewater Treatment Sites	Horsham Waste Water Treatment Works, Christ's Hospital

#### Evidence Base

- West Sussex Waste Plan (Submission)
- West Sussex Minerals Local Plan and Waste Local Plan – Annual Monitoring Report – 2013/2014

#### Summary Future Need and Findings

10.90 There is currently capacity at the sites across the district to accommodate new growth as set out in the Horsham District Planning Framework. The site at Broadbridge Heath which is currently used as a County Transfer Station is owned by West Sussex County Council. This is likely to part of the 'Broadbridge Heath Quadrant', which is an area proposed to undergo major regeneration for a mixed use scheme. This site therefore would need to be located elsewhere within the district.....





Appendix A Infrastructure Delivery Schedule

Location	Infrastructure Type	Infrastructure Project	Total Cost (Min)	Funding Source CIL (Min)	Funding Source S106	Funding Source Other	Delivered By	Existing Comm Funding	Delivery Timescale
Ashington	Transport	Improve on street parking at Church Lane/Foster Lane junction improving sports pavilion car park	£40,000	£0	£0	£40,000	WSCC	£0	2025
	Transport	Speed Management - A24 south of Ashington First School	£24,800	£24,800	£0	£0	PC	£0	2016-2025
	Transport	Improve speed tables in London Road		*	£0	£0	WSCC	£0	2020
	Transport	Extend street lighting to some areas of the village		*	£0	£0	WSCC	£0	2015-2025
	Transport	Junction improvements at Rectory Lane/Meiros Way		*	£0	£0	WSCC	£0	2015-2025
	Transport	Noise reduction A24			£0	£0	WSCC	£0	2020
	Community Facilities	Additional Sports Pitches		*	£0	£0	PC	£0	2015-2025
	Community Facilities	Improved accessibility to allotments		*	£0	£0	PC	£0	2020
	Community Facilities	Lights and footpath for Youth Shelter, traversing wall			*	£0	PC or Ashington Community Centre Trust	£0	2015-2025
	Community Facilities	Play Equipment	£10,000	£10,000	£0	£0	HDC	£0	2020
Community Facilities	Extension of Community Centre (new sports/youth wing to allow demolition of adequate old hall and sports pavilion)	£500,000	£500,000	£0	£0	Parish Council	£0	2025	

	Education	School Safety Zone	£20,000	£20,000	£0	£0	WSCC	£0	2015-2020
Broadbridge Heath	Transport	Traffic Calming	£200,000	£0	£200,000	£0	WSCC	£0	Start 2015-16
	Transport	Broadbridge Heath to Oakhill cycle route	£285,000	£0	£285,000	£0	WSCC	£0	2015-2025
	Transport	Cycle facility - Old Wickhurst Lane - creation of cycle route; upgrade from footpath to bridleway, signage, promotion	£33,000	£0	£33,000	£0	Developer	£0	2015-2025
	Transport	Land south of Broadbridge Heath - Provision of new east - west link road from A24 to A281.		£0	* (Directly providing)	£0	Developer providing directly on the site	£0	2015-2025
	Transport	Land south of Broadbridge Heath - provision of new grade-separated junction on the A24 (part - A24 road bridge and western roundabout only)		£0	* (Directly providing)	£0	Developer providing directly on the site	£0	2015-2025
	Transport	A24 Farthings Hill junction improvements	£1,449,000	£0	£1,449,000	S106, WSCC and other	Developer	£0	2015-2025
	Transport	New vehicular access onto Hills Farm Lane to serve first phase of Berkeley development		£0	* (Directly providing)	Developer	Developer providing directly on the site	£0	2015-2025
	Transport	Broadbridge Heath traffic management scheme	£250,000	£0	£250,000	S106 and WSCC	Developer	£0	2015-2025
	Transport	Warnham Lanes traffic management scheme	£110,000	£0	£110,000	S106 and WSCC	Developer	£0	2015-2025
	Transport	More Buses		*		£0	Arriva/Compass/Metro	£0	2015-2025
Transport	Downs Link Improvements		£100,000		£0	WSCC	£0	2016 onwards	

Education	Secondary School - expansion of Tanbridge House School to 10FE in permanent accommodation	£5,750,000	£0	£5,750,000	S106 and WSCC (inc Basic Needs Grant)	WSCC	£0	2015-2025
Education	Primary Schools - relocation and expansion of Shelley Primary School, moving from a 40 Published Admission Number to a 60 PAN (2FE) from Sept 2017.	£9,700,000	£0	£9,700,000	S106 and WSCC (inc Basic Needs Grant)	WSCC	£0	2017-2018
Education	Primary Schools - Expansion of Arunside from 1FE to 2FE from September 2014 is required to cater for development east of A24	£4,431,000	£0	£4,431,000	S106 and WSCC (inc Basic Needs Grant)	WSCC	£0	2015-2025
Education	Early Years - contribution towards an extra classroom at Arunside Primary School, to provide a pre-school facility.	£250,000	£0	£250,000	S106 and WSCC (inc Basic Needs Grant)	WSCC	£0	2015-2025
Education	Sixth Form - Collyers Expansion	£1,084,600	£0	£1,084,600	S106 and other	Sixth form provider	£0	2015-2025
Education	Primary School			*	£0	WSCC	£0	2017-2018
Education	Secondary School - expansion of Tanbridge House School to 10FE in permanent accommodation	£5,750,000	£0	£5,750,000	S106 and WSCC (inc Basic Need Grant)	WSCC	£0	2016-2020
Libraries	Service improvements	£150,000	£0	£150,000	S106	WSCC	£0	2015-2025

	Open Space, Sport and Recreation	Extension to existing Leisure Centre?	?	?		£0		Land provided by S106 re DC/09/2101 (Wickhurst Green development)	?
	Community Facilities	Improve outdoor facilities	£200,000	£0	£0	£200,000	HDC	£0	2015 - 2025
	Community Facilities	Village Centre Improvements	£25,000	£25,000	£0	£0	HDC	£0	2015 - 2025
	Open Space, Sport and Recreation	Football Pavilion	£700,000		?	£0	HDC	£0	2016
	Community Facilities	Improve quality, capacity and accessibility of play areas	£200,000	TBC	TBC	£0	TBC	TBC	TBC
	Improvements to Scout facilities	TBC	TBC	TBC	TBC	TBC	TBC	TBC	TBC
Billingshurst	Transport	Junction improvement - A29 Oakhurst Lane	*		* (Directly providing)	£0	Developer providing directly on the site	£0	S106 Trigger
	Transport	Lighting request on the footbridge over the A29 to better enable children to safely cross the youth club.	*			£0	WSCC	£0	2015-2025
	Transport	Marringdean Road to Natts Lane pedestrian improvements to join up footpaths in Marringdean Road leading to Natts Lane.	*	*	*	S106 and CIL	WSCC	£0	2015-2025

Transport	Bus Service and stop improvements	£12,000	£12,000	£0	£0	WSCC	£0	2015-2025
Transport	Railway station improvements				£0		£0	2015-2025
Transport	Traffic calming - entrance to Billingshurst on East Street	*					£0	2015-2025
Transport	Improvements to the school travel plan	£95,486	£95,486	£0	£0	WSCC	£0	2015 - 2025
Education	Secondary School - land and contributions towards expansion of the Weald School and contribution towards Multi Use Games Area (MUGA) includes sixth form accommodation expansion.	£10,000,000	£0	£10,000,000	£0	WSCC	£0	2015-2025 (Sept 2017+)
Education	Primary Schools - land and contributions towards the construction costs of one new 1FE primary school.	£4,800,000	£0	£4,800,000 - £5,400,000	£0	Developer	£0	2015-2025 (Sept 2019+)
Education	Early Years - contributions towards an extra classroom at the primary school to provide a pre-school facility.	£250,000	£0	£250,000	£0	WSCC	£0	2015-2025
Libraries	Potential partnership project with Village Community and Conference Centre existing building	£75,000	£0	£75,000-£100,000		WSCC	£0	2015-2025
Transport	Village enhancement scheme - Billingshurst Station (delivery of scheme to improve accessibility and streetscene)	£100,000	£0	£100,000	£0	WSCC	£0	2015-2025
Community Facilities	Improvements to Billingshurst Community Buildings	£35,000	£35,000	£0	£0	Billingshurst Parish Council	£0	2015-2025
Community facilities	Billingshurst play area improvements	£700,000	£700,000	£0	£0	HDC	£0	2015-2025

	Green Space	Station Road Gardens	£210,000	£168,000		£0	Billingshurst Parish Council	£42,000 (Parish Council)	2015-2025
	Green Space	Allotments	£20,000	£20,000	£0	£0			2015-2025
	Public and Community Facilities	Fire and Rescue - provide hydrant within drill yard	£10,000	£10,000	£0	£0	WSCC	£0	2015-2025
	Community Facilities	Dedicated Youth Facility - Billi Eye Project	£800,000	TBC	TBC	TBC	Parish Council	TBC	TBC
	Transport	Car parking for station	TBC	TBC	TBC	TBC	WSCC/Network Rail	£0	TBC
	Community Facilities	Provision of day care facilities for senior citizens	TBC	TBC	TBC	TBC	WSCC	£0	TBC
	Flood Risk	Surface Water Management Plan and sustainable drainage	TBC	TBC	TBC	TBC	WSCC	£0	TBC
	Community Facilities	Provision of burial ground	TBC	TBC	TBC	TBC	HDC	£0	TBC
	Health	Provision of additional health services including dentist	TBC	TBC	TBC	TBC	NHS	£0	TBC
	Police	Provision of additional PCSOs	TBC	TBC	TBC	TBC	Sussex Police	£0	TBC
	Transport	Five Oaks roundabout A264/A29	*	*	*	S106 and CIL	WSCC	£0	
Bramber	Transport	Upgrade footpath leading up to St. Nicholas' Church	£10,000	£0	£0	£10,000	Parish Council	£0	2015-2025
	Transport	All-weather hard surfacing of Downs Link	£150,000	£150,000	£0	£0	WSCC	£0	2015-2025
	Transport	Downs Link A283 crossing – provide 2m wide central refuge + 30mph speed limit	£30,000	£0	£0	30000?	WSCC	£0	2015-2025
	Transport	20mph speed limit	£4,000	£0	£0	£4,000	WSCC to confirm	£0	2015-2025

	Transport	New footway - Maudlyn Lane to Soper Lane	£6,000	£6,000	£0	£0	WSCC	£0	2015-2025
	Community Facilities	Upgrade Clays Field as a Public amenity area				£0	Parish Plan	£0	2015-2025
	Transport	Improvements to 30mph signage	£17,000	0	£0	£17,000	Balfour Beatty	£0	2018
	Flood Risk	Investigations to determine flood prevention measures required due to issues arising from housing developments along the river.	TBC	TBC	TBC	TBC	TBC	£0	TBC
	Highways	Redesign of pavement for consistency and to improve safety	TBC	TBC	TBC	TBC	Parish Council	0	2020
Colgate	Transport	Traffic Calming (pinch points on Forest Road)		*		£0	WSCC	£0	2015-2025
	Transport	Formal crossing on A24	TBC	*	*	£0		£0	2015-2025
	Transport	Pedestrian Scheme - provision of footway on south side of A264 from Holmbush Farm to layby	TBC	*	*	£0		£0	2015-2025
	Transport	Route Safety Scheme - A264 Faygate to Crawley	£80,000	£80,000	£0	£0		£0	2020-2025
	Community Facilities	Colgate Village Hall Improvements	TBC	*	*		Village Hall Committee		
	Community Facilities	Colgate Village Play Area Improvements	£50,000	£50,000	£0	£0	Village Hall Committee		
Cowfold	Transport	Cycling Facilities – 3m shared cycle track widen and resurface / crossing point and signing	£7,886	£7,886	£0	£0		£0	2020
	Transport	Air Quality - study to look at means of reducing traffic emissions and congestion in village centre (either side of A272 / A281 double mini roundabout)		*		£0	£0	£0	201502030



	Transport	Speed Management - A281 southbound entrance to Cowfold (possibly including Speed Camera or Vehicle Activated Sign				£0		£0	2015-2025
	Transport	Improved footway - A281 (Hare and Hounds Public House southwards)	£99,000	0	£0	£99,000		£0	2015-2025
	Transport	Improved footway A281/A230 (north of village)	£94,900	0	£0	£94,900		£0	2015-2025
	Community Facilities	Improved/new pavilion	£50,000	£50,000	£0	£0	Cowfold Parish Council/HDC	£0	2020-2025
Henfield	Transport	Traffic Speed Indicator	£5,000	£5,000	£0	£0	PC	£0	2018-20
	Transport	New Long Stay Car Park	£100,000	0	£0	£100,000	PC	£0	2016-17
	Transport	Improve junction High Street/Church Street	£100,000	0	£0	£100,000	WSCC?	£0	2016 onwards
	Transport	VAS sign - London Road	£15,000	£15,000	£0	£0	WSCC	£0	2016 onwards
	Transport	School Safety Zone - St Peter's CE Primary School	£10,000	£10,000	£0	£0	WSCC	£0	2015-2025
	Transport	Cycle Link between Deer Park and the Downs Link	£200,000	200000	£0	£0	PC	£0	2016-17
	Health	Extension to medical centre	£500,000	£500,000	£0	£0	Medical Centre	£0	2018-20
	Community Facilities	Henfield Haven (formerly Day Centre) requires reserve funding	£15,000pa	£15,000	£0	£0	Henfield Social Enterprise CIC	£0	2018-20
	Community Facilities	Town / village enhancement scheme - accessibility improvements and access to Farmers Market, measures identified in TPG study.	£8,099	£8,099	£0	£0		£0	2015-2025

	Community Facilities	Henfield Play Facility improvements	£600,000	£600,000	£0	£0		£0	
	Community Facilities	3G pitch	£1,461,000	£1,461,000	£0	£0	HDC	£0	2020
	Community Facilities	Allotments	£30,000	£30,000	£0	£0	HDC	£0	2016-2025
	Community Facilities	Noise barrier around skate park	£40,000	£0	£0	£40,000	PC/HDC	£0	2016 onwards
	Open Space, Sport and Recreation	Construction of two earth bunds around reed bed	£30,000	£0	£0	£30,000	PC	£0	2016-17
	Open Space, Sport and Recreation	New pavilion	£250,000	£250,000	£0	£0	PC	£0	2016-17
	Open Space, Sport and Recreation	Extension to cricket pavilion	£500,000	£0	£0	£0	500000	£0	2016-17
	Open Space, Sport and Recreation	Drainage	£200,000	£0	£0	£200,000	PC	£0	2016-17
	Cemetery	Henfield Cemetery Extension	£60,000	£60,000	£0	£0	PC/HDC?	£0	2020-2025
	Library	Library Services - upgrade of facilities	£30,000	£30,000	£0	£0	WSCC	£0	2015 -2031
Horsham Town	Transport	Cycle facility - creation of a safe crossing of A264 to complete (Horsham - Crawley Cycle Route (requires construction of path, signage, promotion) Cycle Route - Horsham to Crawley Phase 3. Provision of Bridleway on the same route (no cost included).	£140,900	£0	£140,900	£0	Developer		2015-2025

Transport	Aspirational Cycle network	£1,159,054	£1,159,054	£0	£0	WSCC	£0	2015-2025
Transport	Cycle route enhancements - upgrade and widen existing footways, on road cycle way in both directions on Rusper Road	£499,491	£499,491	£0	£0		£0	2015-2025
Transport	Public transport service enhancement	£470,000	£0	£470,000	£0	Developer	£0	2015-2025
Transport	A24/A264 Great Daux Roundabout junction improvements	£4,422,000	£0	£4,422,000	S106 and WSCC	Developer	£0	2015-2025
Transport	A24/B2237 Robin Hood Roundabout improvements	£660,000	£0	£660,000	S106 and WSCC	Developer	£0	2015-2025
Transport	A264/Rusper Road improvement			*	£0	Developer	£0	2015-2025
Transport	A264/B2195 Moorhead Roundabout improvements	£110,000	£0	£110,000	£0	Developer	£0	2015-2025
Transport	A264/Tower Road/ Faygate Lane junction 19 improvements	£398,000	£0	£398,000	£0	Developer	£0	2015-2025
Transport	New Railway Station	£13,600,000	£0	£13,600,000	£0	Developer / Network Rail		2015-2025
Transport	Route safety scheme - Great Daux roundabout to Surrey Border	£80,000	£0	£80,000	£0	WSCC	£0	2015-2025
Education	Secondary Schools - land and contributions towards the construction cost for a new secondary school (6FE) with potential to expand to 8FE	£26,700,000	£0	£26,700,000 - £28,500,000	S106 and WSCC (inc Basic Need Grant)	Developer	£0	2015-2025 (Sept 2020+)

Education	Primary School - land and contributions towards the construction costs for two new primary school to include early years and community facilities.	£16,600,000	£0	£16,600,000 - £19,000,000	S106 and WSCC (inc Basic Need Grant)	Developer	£0	2015-2025 (Sept 2020+)
Education	Special Education - land and contributions towards the construction costs of a new special school (minimum 60 places for ages 2-19)	£8,000,000	£0	£8,000,000	S106 and WSCC Basic Need Grant	Developer and WSCC	£0	2015-2025 (Sept 2020+)
Education	Early Years - land and contributions towards two 50 place co-located nursery/early years facilities with primary schools and community facilities.	£1,644,000	£0	£1,644,000	S106 and WSCC Basic Need Grant	Developer and WSCC	£0	2015-2025
Education	Sixth Form - contributions towards appropriate facilities at the College of Richard Collyer or equivalent sixth form provision.	£1,720,000	£0	£1,720,000	£0	Sixth Form Provider	£0	2015-2025
Education	Safer Routes to Schools/Travel Plan – Heron Way	£10,000	£10,000	£0	£0	WSCC	£0	2015-2025
Education	Safer Routes to Schools/Travel Plan – Forest School	£10,000	£10,000	£0	£0	WSCC	£0	2015-2025
Education	School Safety Zone/Travel Plan- St Marys Primary School	£10,000	£10,000	£0	£0	WSCC	£0	2015-2025
Education	School Safety Zone - Greenway and Trafalgar School	£10,000	£10,000	£0	£0	WSCC	£0	2015-2025
Education	Safer Route to Schools - Horsham Nursery School & Kingslea	£10,000	£10,000	£0	£0	WSCC	£0	2015-2025
Education	Safer Routes to School Scheme - Tanbridge House School	£10,000	£10,000	£0	£0	WSCC	£0	2015-2025

Education	School Safety Zone - Queen Elizabeth School	£10,000	£10,000	£0	£0	WSCC	£0	2015-2025
Education	Route safety scheme - Lambs Farm Road, Roffey - Traffic management	£10,000	£10,000	£0	£0	WSCC	£0	2015-2025
Education	School Safety Zone/Travel Plan - Littlehaven Primary School	£10,000	£10,000	£0	£0	WSCC	£0	2015-2025
Libraries	Tier 7 Library offer at strategic site	£75,000	£0	£75,000 - £100,000	£0	WSCC	£0	2015-2025
Green Infrastructure / Transport	The Green Grid Key Routes are North Horsham to Town Centre and Holbrook Club to Town Centre via Novartis site.	£2,500,000	£2,500,000	£0	£0	WSCC/HDC	£0	2015-2025
Green Infrastructure	Horsham townscape enhancement	£40,000	£40,000	£0	£0	HDC	£0	2015-2025
Green Infrastructure	Improved drainage on sports pitches	£500,000	£500,000	£0	£0	HDC	£0	2015-2025
Community Facilities	Horsham Play Area improvements (Play equipment, landscaping, fencing)	£3,300,000	£3,300,000	£0	£0	HDC	£0	2016-2025
Community Facilities	3G pitch	£1,461,000	0	£1,461,000	£0	HDC	£0	2016-2025
Community Facilities	Changing rooms and community facility improvements at neighbourhood recreation grounds	£3,300,000	£3,300,000	£0	£0	HDC	£0	2016-2025
Utilities	Sewerage and water distribution infrastructure for land north of Horsham	Not known	£0	£0	Developer and Southern Water	Southern Water and the developer	£0	In parallel with development
Utilities	Sewerage infrastructure for Novartis site.	Not known	£0	£0	Developer and Southern Water	Southern Water and the developer	£0	In parallel with development

Open Space, Sport and Recreation	Riverside Walk improvements in Forest	£100,000	£100,000	£0	HLF	HTCP/HDC	£0	On-going
Open Space, Sport and Recreation	Riverside Walk improvements in North Horsham	£100,000	£100,000	£0	HLF	HTCP/HDC	£0	On-going
Open Space, Sport and Recreation	Riverside Walk improvements in Trafalgar	£100,000	£100,000	£0	HLF	HTCP/HDC	£0	On-going
Community Facilities	Improvements to North Street subway		*		£0	PC/WSCC	£0	2016 onwards
Open Space, Sport and Recreation	Riverside Walk improvements in Denne		*		£0	HDC	£0	On-going
Flood Risk	Warnham Mill/Provender Mill	£2,000,000	0	£0	£2,000,000	Environment Agency	£0	2022
Healthcare	Primary Care Centre	£7,000,000	£0	£0	£700,000	NHS England	Project only agreed in principle by NHS England at this stage	2021 estimated depending on planning consent for the major development
Community Facilities	Horsham Rugby Club Improvements	£100,000	£100,000	£0	£0	HDC	£0	TBC
Community Facilities	Tennis Bubble - Horsham Tennis Club	£400,000	£400,000	£0	£0	HDC	£0	TBC
Community Facilities	Horsham Skate Park remodelling to concrete	£150,000	£150,000	£0	£0	HDC	£0	2024

	Transport	Five Oaks roundabout A264/A281	£871,000	£0	£871,000	S106 and WSCC	Developer	£0	
	Transport	Broadbridge Heath & Slinfold to Christs Hospital pedestrian & cycle route improvement via the Downs Link & neighbouring access links							
	Transport	Public transport service enhancement	£1,116,000	£0	£1,116,000	£0	Developer	£0	
Nuthurst	Transport	Extension to pavement at entrance to Swallowfield	?	*		£0	WSCC	£0	2015-2031
	Transport	Improvements to junction	?	*		£0	WSCC	£0	2015-2031
	Transport	Safe access to A281	?	*		£0	WSCC	£0	2015 - 2031
	Transport	Cycle Track	?	*		£0	WSCC	£0	2015-2031
	Transport	Car Parking	?	*		£0	WSCC	£0	2015-2031
	Education	Safer Routes to School Scheme	£10,000	£10,000	£0	£0	WSCC	£0	2015-2013
Pulborough	Open Space, Sport and Recreation	Sports and Youth Club	£750,000	£500,000	£250,000	£0	PC	£250,000	2016-17
	Community Facilities	3G pitch	£1,461,000	£1,461,000	£0	£0	HDC	£0	2015-2015
	Community Facilities	Pulborough Play Facility Improvements	£200,000	£200,000	£0	£0	HDC	£0	2015-2025
	Utilities	Telecommunications Infrastructure - High Speed Broadband	£30,000	£30,000	£0	£0	BT/WSCC	£0	2016 onwards

	Transport	A Roads inadequate for HGVs	£1,000,000	?		£0	WSCC	Some S106 funds - amount unknown	2020
	Transport	Air Quality management	*	*		£0		£0	2015-2020
	Transport	Pedestrian enhancements – Provision of pedestrian in road warning signs and vehicle activated sign to manage traffic speeds in conjunction with possible minor amendments to the speed limit to improve pedestrian safety in the vicinity of A283 Stopham Road railway bridge	£35,000	£35,000	£0	£0	WSCC	£0	2015-2025
	Transport	Pedestrian enhancements – Pedestrian crossing on A283 by railway station (east of Station Approach)	*	*		£0	WSCC	£0	2015-2025
Rusper	Transport	Potential new railway station on the Horsham - Three Bridges line with associated car parking and multi-modal interchange	£11,430,000	£0	£11,430,000 - £16,600,000	£0	Developer	£0	2015 – 2020
Rudgwick	Transport	Improvements to junction	?	?		£0	WSCC	£0	2020
	Transport	Car Parking	?	?		£0	WSCC	£0	2020
	Education	Safer Routes to School Scheme at Rudgwick Primary School consisting of a crossing point on Queen Elizabeth Road about 30m west of the junction with Princess Anne Road.	£5,000	£5,000	£0	£0	WSCC	£0	2015 – 2020
	Community Facilities	Multi games area	£120,000	£120,000	£0	£0	HDC/Rudgwick Parish Council	£0	2015 – 2020



	Community Facilities	Refurbishment of the Jubilee Hall, Church Street	£50,000	£50,000	£0	£0	WSCC	£0	2015 – 2020
Shermanbury	Community Facilities	Village Hall	£200,000	£200,000	£0	£0	PC	£0	2015-2025
	Open Space, Sports and Recreation	Play Area	£200,000	£200,000	£0	£0	PC	£0	2015-2025
	Transport	Improvement and installation of pedestrian footpaths	£50,000	£0	£0	£50,000	WSCC	£0	2015-2025
	Transport	Pedestrian road crossings	£50,000	£0	£0	£50,000	WSCC	£0	2015-2025
Shipley	Transport	A24 Buckbarn - Increase length of northbound right turning lane	£100,000	£0	£100,000	£0	WSCC	£0	2015-2025
	Transport	Buckbarn traffic lights refurbishment	£320,000	£0	£320,000	£0	WSCC	£0	2015-2025
	Transport	Buckbarn traffic lights refurbishment Phase 2	£100,000	£0	£100,000	£0	WSCC	£0	2015-2025
	Transport	Route Safety Scheme - A272 Buckbarn to Bolney	£170,000	£0	£170,000	£0	WSCC	£0	2015-2025
Slimfold	Transport	Speed activated signs	£10,000	£10,000	£0	£0	WSCC	£0	2015-2025
	Community Facilities	Village Hall	£250,000	£250,000	£0	£0	PC	£0	2015-2025
	Community Facilities	Upgrade sports pavilion, Cherry Tree	£10,000	£10,000	£0	£0	PC/Football Club	£0	2015-2025
	Community Facilities	New Scout Hut	?	?		£0	PC/Scouts	£0	2015-2025

	Community Facilities	Youth Space	?	?		£0	PC/Youth Club	£0	2015-2025
	Community Facilities	Upgrade cricket pavilion	£500,000	?	£0	£500,000	PC/Cricket Club	£0	2015-2025
	Open Space, Sport and Recreation	Village Green / Village Orchard	?	?		£0	PC/Community	£0	2015-2025
	Open Space, Sport and Recreation	Upgrade and add play equipment	£50,000	£30,000	£0	£20,000	PC/Youth Club	£0	2015-2025
	Telecommunications	Improved broadband and mobile signals	?	?		£0	Telecoms Provider/BT/WSCC?	£0	2015-2025
Southwater	Transport	Pedestrian/Cycle bridge across A24	£2,000,000	£2,000,000		£0	WSCC	£0	2020
	Transport	Circular Bus Route	?	?		£0	Bus Service Provider	£0	2020
	Transport	Bus Shelters with Real Time Passenger Information	?	?		£0	Bus Service Provider/WSCC	£0	On-going
	Transport	Circular leisure cycle/walking route around parish	?	?		£0	WSCC	£0	2025
	Transport	Cycle Facility - Shared Use Cycle/pedestrian bridge across A24 linking Southwater to Horsham (Reeds Lane) and Cycle Route - Southwater to Hop Oast (B2237 Worthing Road) cycle route via	£2,124,500	£11,000	£2,113,500	S106 and CIL	Developer	£0	2015-2025

	Southwater Street bridge over A24.							
Transport	Public transport service enhancement				£0	Public transport providers	£0	2015-2025
Transport	A24/B2237 Worthing Road (Hop Oast) Roundabout improvements	£264,000	£0	£264,000	£0	Developer	£0	2015-2025
Transport	Aspirational Cycle Network - Southwater	£47,554	£47,554	£0	£0	WSCC	£0	2015-2025
Transport	Cycle Facility - Station Road to North Street (route to provide improved access to railway station. Will need to be a combination of signs and further measures to remove parking to allow enough space for improvement - also part of the route is a freight route)	£36,000	£36,000	£0	£0	WSCC	£0	2015-2025
Transport	A24/Mill Straight Junction 21 improvements	£86,000	£0	£86,000	£0	Developer	£0	2015-2025
Transport	Tarmac footpath	?	?		£0	WSCC	£0	2020
Utilities	Broadband	?	?		£0	BT/WSCC?	£0	On-going
Open Space, Sport and Recreation	Continued enhancement and maintenance of Country Park	?	?		£0	HDC/PC	£0	On-going
Community Facilities	Hall Space provision e.g. for Scouts and Guides	£1,000,000	?		£0	HDC/PC	£0	On-going
Community Facilities	Youth worker provision	£140,000	£140,000	£0	£0 [removed: £70,000pa]	Parish Council	£0	On-going

Community Facilities	Allotments	£65,000	£650,000	£0	£0	PC	£0	2020
Community Facilities	Southwater Country Park Attractions	£5,000,000	£5,000,000	£0	£0		£0	2015-2020
Community Facilities	3G pitch	£1,000,000	£400,000	£600,000	£0		£0	
Open Space, Sport and Recreation	Southwater Leisure Centre Changing Rooms	£61,000	£61,000	£0	Grants	PC	£0	2017
Open Space, Sport and Recreation	Extension to Southwater Leisure Centre	£750,000	0	£750,000	£0	PC	£0	2025
Transport	Hop Oast Waste Recycling Site: anticipated that capacity may be needed to serve future housing growth.	£2,500,000	£2,500,000	£0	£0	WSCC	£0	2015-2025
Education	Early Years - contribution to provide or expand a pre-school facility in the village, possibly in an extra classroom at an existing school.	£250,000	£0	£250,000	£0	Developer	£0	2015-2025
Education	Primary School - contribution towards expansion of existing primary schools in Southwater	£2,000,000	£0	£2,000,000 - £3,000,000	£0	Developer	£0	2015-2025 (Sept 2019+)
Education	Secondary School - contribution towards the expansion of Tanbridge House School	£250,000	£0	£250,000	£0	Developer	£0	2015-2025

	Libraries	Contribute to re-design of library offer in partnership with Southwater Parish Council	£30,000	£0	£30,000	£0	WSCC	£0	2015-2025
	Utilities	Sewerage and water distribution infrastructure for Southwater strategic site	Not known	£0	£0	Developer and Southern Water	Southern Water and the developer	£0	In parallel with development
	Community Facilities	Play Area improvements - 10 small play areas and 3 NEAPs	£800,000	£800,000	£0	£0	HDC	HDC/CiL	TBC
	Community Facilities	MUGA and Football Wall	TBC	TBC	TBC	£160,000	HDC/Parish Council	Lottery Grants, LA contributions and developer contributions	TBC
	Transport	Land widening on approach to Hop Oast roundabout	TBC	£0	TBC	£0	WSCC	TBC	TBC
Sussex Police	Police	Division based accommodation	£509,952	*	*	£0	Police	£0	Dependent on building programme
Sussex Police - District	Police	Central and Shared accommodation	£1,434,240	*	*	£0	Police	£0	Dependent on building programme

Police	Provision of fleet vehicles (marked and unmarked cars, vans and units for road policing)	£231,710	*	*	£0	Police	£0	Dependent on building programme
Police	Specialist Officer Equipment (e.g. body worn camera, radio/telecoms, specialist safety/detection equipment and training)	£708,238	*	*	£0	Police	£0	Dependent on building programme
Police	Information Technology Equipment for Officers	£116,000	*	*	£0	Police	£0	Dependent on building programme
Police	Information Technology Equipment for Police staff members	£64,000	*	*	£0	Police	£0	Dependent on building programme
Police	ANPR Cameras x 6	£66,000	*	*	£0	Police	£0	Dependent on building programme
Police	CCTV cameras	TBC and dependant on specific locations of development, in relation to existing CCTV and	TBC	TBC	£0	Police	£0	Dependent on building programme

			future areas of vulnerability						
	Police	Custody Provision	£319,404	*	*	£0	Police	£0	Dependent on building programme
	Police	Provision of fleet bicycles	£11,600	*	*	£0	Police	£0	Dependent on building programme
Storrington and Sullington	Public Conveniences	Introduction of public toilets	?	?		£0	HDC?	£0	2016 onwards
	Mobile Signal	Improved mobile phone coverage 4G and beyond	?	?		£0	?	£0	2015-2025
	Youth Facilities	Replacement toddler play equipment and new skate park	£120,000	£80,000	£40,000	£0	PC/HDC	£40,000 (S106)	2016 onwards
	Open Space, Sport and Recreation	Hurston Lane Field improvement plan- new football pitches and running track	?	?		£0		£0	2015-2025

	Community Facilities	3G pitch	£1,461,000	£1,461,000	£0	£0	HDC	£0	2015-2020
	Community Facilities	Storrington and Sullington Play Facility improvements	£400,000	£400,000	£0	£0	HDC	£0	2015-2020
	Community Facilities	Improvements to Parish Hall (replacement windows, resurfacing of car park)	£24,000	£24,000	£0	£0	PC	£0	2015-2025
	Open Space, Sport and Recreation	Improvements to Riverside Walk	?	?		£0	HDC?	£0	2015-2025
	Transport	Air Quality - possible changes to road network (e.g. changes to B2139 School Hill / High Street / Manleys Hill mini roundabout junction and / or closure of School Hill with traffic redirected via Old Mill Drive / Mill Lane				£0		£0	2015-2030
	Library	Library Service - upgrading of facilities to meet increased demand from new developments	£60,000	£60,000	£0	£0	WSCC	£0	2015-2025
Steyning	Community Facilities	Play equipment	£30,000	£0	£30,000	£0	HDC	£0	2015-2030
	Community Facilities	Play equipment	£35,000	£35,000	£0	£0	HDC	£0	2015-2030
	Education	Safer Routes to School Scheme - Steyning Grammar School	£30,000	£30,000	£0	£0	WSCC	£0	2015-2025



	Education	School Safety Zone - Ashurst Primary School	£10,000	£10,000	£0	£0	WSCC	£0	2015-2025
	Education	School Safety Zone - St Andrew's Primary School	£10,000	£10,000	£0	£0	WSCC	£0	2015-2025
	Education	School Safety Zone - Steyning Grammar School	£10,000	£10,000	£0	£0	WSCC	£0	2015-2025
	Library	Library Service - upgrading of facilities to meet increased demand from new developments	£30,000	£30,000	£0	£0	WSCC	£0	2015-2025
	Community Facilities	Steyning and Upper Beeding Play Facility improvements	£500,000	0	£500,000	£0	HDC	£0	2015-2025
District Wide	Community Facilities	Extension of/strategic location for Hockey	£1,000,000	£1,000,000	£0	£0	TBC	TBC	TBC
	Community Facilities	Improvements to dryside sport and leisure centres (sports halls, activity halls, studios, sport specific areas, changing facilities and ancillary areas). Equates to min of 6 badminton courts plus additional requirements)	£7,500,000	£2,500,000	£1,000,000	£4,000,000	TBC	TBC	TBC
	Community Facilities	Improvements to existing Swimming Pool provision (swimming pools, leisure waters, changing facilities and associated water treatment plant (Equates to min of 280m2 of water space of 5-6 swimming lanes plus additional requirements).	£3,000,000	£3,000,000	£0	£0	HDC/Community Partners	TBC	TBC
	Community Facilities	Improvements to bowls facilities (outdoor flat greens, indoor bowls, short mat bowls)	£200,000	£200,000	£0	£0	HDC	TBC	TBC

	Community Facilities	Improvements to existing health and fitness facilities (Exercise, gym work stations or equivalent (equates to 160 exercise stations))	£350,000	£350,000	£0	£0	HDC/Community Partners	TBC	TBC
	Community Facilities	Multi-functional green space 5.5sqm per person (per new resident) or tartaric and sub-district MFGs	£2,370,000	£2,370,000	£0	£0	HDC	TBC	TBC
	Community Facilities	New seating in green spaces and recreation grounds	£200,000	£200,000	£0	£0	HDC	TBC	TBC
	Community Facilities	Green space infrastructure access improvements/access to the countryside improvements	£700,000	£700,000	£0	£0	HDC	TBC	TBC
Horsham town	Community Facilities	Parkour outdoor training area	£150,000	£150,000	£0	£0	HDC	TBC	2017
District Wide	Community Facilities	Parkour/freestyle gymnastics Indoor facility to accommodate Parkour/Freestyle Gymnastics with associated ancillary facilities	£1,000,000	£1,000,000	£0	£0	HDC	TBC	2015-2020
District Wide	Community Facilities	Indoor tennis 4 courts	£500,000	£500,000	£0	£0	HDC	TBC	TBC
	Education	School Safety Zone - Thakeham First School	£10,000	£10,000	£0	£0	WSCC	£0	2015-2031
Upper Beeding	Community Facilities	Sports facilities project (re-building and extension of faculties)	£200,000	£200,000	£0	£0	Parish Council	£0	2015-2025

B	Community Facilities	New play equipment (LEAP)	£50,000	£50,000	£0	£0	Parish Council	£0	2015-2025
	Community Facilities	New play equipment (LEAP)	£50,000	£50,000	£0	£0	Parish Council	£0	2015 - 2025
Washington	Transport	Extension to existing car park	?	*		£0	PC	£0	2015-2025
	Transport	Improvements to junction	?	*		£0	WSCC	£0	2015-2025
	Transport	Improvements to junction	?	*		£0	WSCC	£0	2015-2025
	Community Facilities	Village Hall Improvements	£50,000	?		£0	SDNP?	£0	2015-2025
	Health	New GP Surgery	£200,000	?		£0	SDNP?	£0	2015-2025
	Open Space, Sport and Recreation	Replacement children's play area	£65,000	?		£0	SDNP?	£0	2015-2025
	Open Space, Sport and Recreation	Millennium Footpath	£75,000	?		£0	SDNP?	£0	2015-2025
	Education	School Safety Zone - St Mary's C of E First School	£10,000	£10,000	£0	£0	WSCC	£0	2015-2031
West Chiltington	Utilities	Mobile/Cellular, 3G and 4G capacity and quality	?	*		£0	WSCC/Utility Companies	£0	2015-2025
	Utilities	Broadband speed/super fast	?	*		£0	WSCC/Utility Companies	£0	2015-2025
	Transport	Bus Routes to surrounding towns. Bus routes to surrounding towns, villages, stations, shops and GP surgeries	?	*		£0	Bus Companies	£0	2015-2025

	Transport	Bus Shelters	£9,000	£9,000	£0	£0	WSCC/HDC	£0	2015-2025
	Transport	Upgrade of footpaths to accessible all weather surface to allow use by pushchairs/buggies, wheelchairs & mobility scooters	?	*		£0	WSCC	£0	2015-2025
	Transport	Shared access road surface with 20mph road speed for enhanced pedestrian safety.	?	*		£0	WSCC	£0	2015-2025
	Transport	School drop off and pick up parking facilities	?	*		£0	WSCC	£0	2015-2025
	Community Facilities	Youth facilities in the village - District wide need	?	*	£0	£0	WSCC/HDC	£0	2015-2025
	Healthcare	GP Capacity	?	*		£0	CCG/NHS England	£0	2015-2025
	Education	School Safety Zone - West Chiltington Community First School	£10,000	£10,000	£0	£0	WSCC	£0	2015-2031
Warnham	Transport	Strood Lane entry control and associated traffic calming	£100,000	£0	£0	£100,000	WSCC	£0	2015-2025
	Transport	Broadbridge Heath Road limited to 40 mph	?	*		£0	WSCC	£0	2015-2025
	Transport	Friday Street traffic calming	£20,000	£0	£0	£20,000	PC	£0	2015-2025
	Transport	40 mph speed limit on A24	£12,000	£0	£0	£12,000	PC	£0	2015-2025

Transport	Signal controlled pedestrian crossing, Kingsfold				£0	WSCC	£0	2015-2025
Transport	A24 junction safety scheme				£0	WSCC	£0	2015-2025
Transport	Cycle Route – District Wide	*		£0	£0	WSCC	£0	2015-2025
Transport	Traffic Calming	£200,000	0	£200,000	0	WSCC	£0	2015-2025
Community Facilities	New Pavilion	£250,000	0	£250,000	0	Cricket Club/PC	£0	2015-2025
Open Space, Sport and Recreation	New Play Area	£50,000	0	£50,000	0	PC	£0	2015-2025
Community Facilities	Allotments	£50,000	0	£50,000	0	PC	£0	2015-2025
Education	School Safety Zone - Warnham Primary	£10,000	£10,000	£0	£0	WSCC	£0	2015-2031
Transport	Pavement at Hole Street	?	*		£0	WSCC	£0	2015-2025
Community Facilities	Children's Play Area	?	*		£0	HDC	£0	2015-2025
Transport	Reduction in speed limit on Hole Street	?	*		£0	WSCC	£0	2015-2025
Transport	Traffic calming measures on Hole Street/Water Lane	?	*		£0	WSCC	£0	2015-2025
Community Facilities	Replacement Village Hall	£200,000	?		£0	SDNP	£0	2015-2025
Open Space, Sports and Recreation	New children's play area	£50,000	?		£0	SDNP	£0	2015-2025

	Transport	Cycle Path	£1,040,000	?		£0	SDNP	£0	2015-2025
	Transport	Pavement/Footpath	£30,000	?		£0	SDNP	£0	2015-2025